

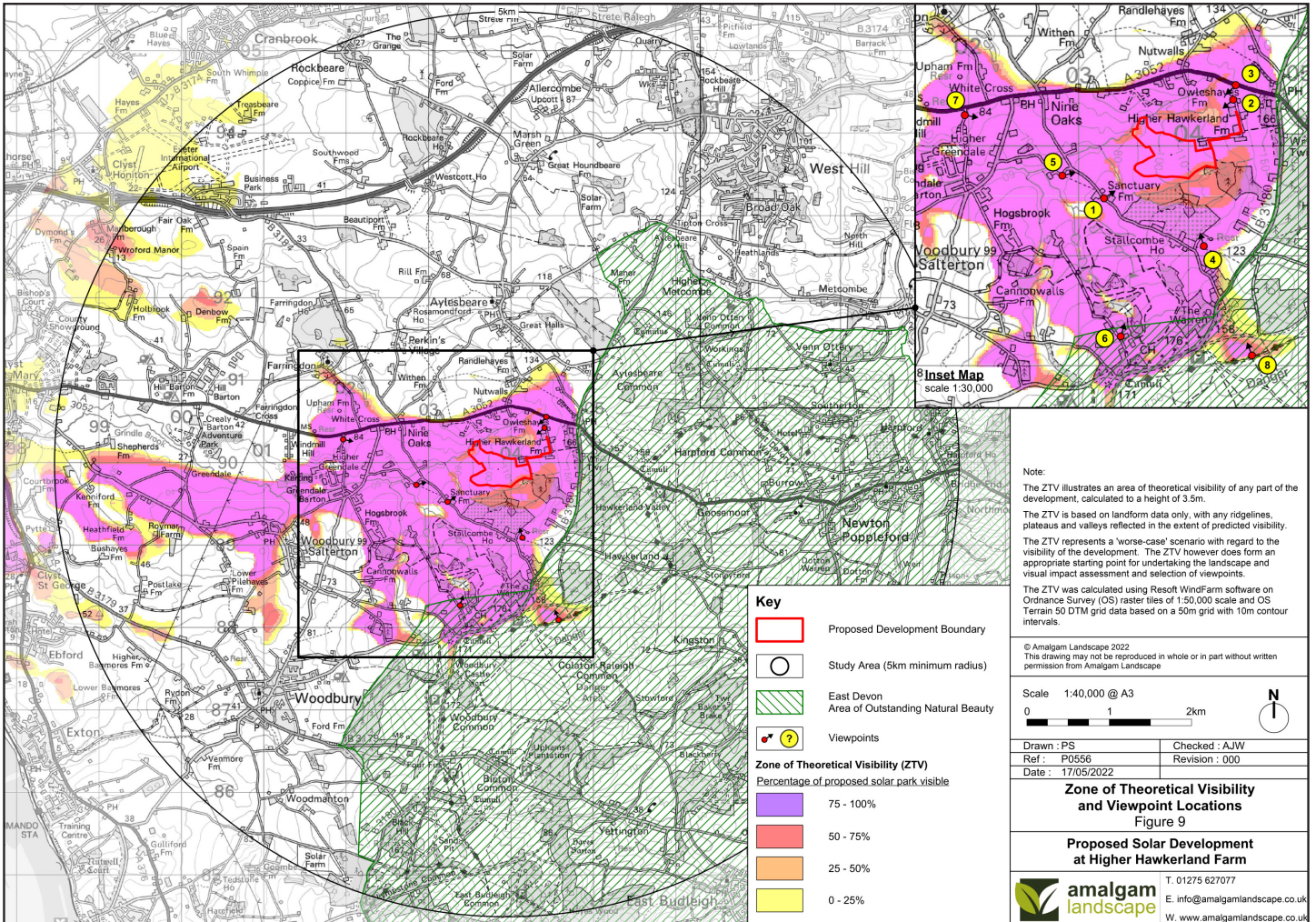
SPRING

ENABLING CLEAN GROWTH

HIGHER HAWKERLAND FARM WHAT YOU WILL SEE

An important piece of work that informs our planning proposal is the Landscape and Visual Impact Assessment (LVIA). Working with the landscape officers at East Devon District Council, we identify the properties and the areas that are to be considered by the LVIA. Our Landscape Architect then assesses the impact our project may have.

Below is a plan that shows the properties and the areas that are to be assessed within the LVIA and following are a selection of pictures taken from the selected sites which include visualisations with the proposed solar panels superimposed.



VIEWPOINTS:

- VP1** View from gateway along Sanctuary Lane, adjacent to Sanctuary Farm.
- VP2** View from gateway along access road leading to Higher Hawkerland Farm.
- VP3** View from bus stop along A3052.
- VP4** View from public right of way near Sunnhaye Fruit Farm.

- VP5** View from public right of way near Winkleigh Farm.
- VP6** View from Woodbury Park Golf Club, in East Devon Area of Outstanding Natural Beauty (AONB).
- VP7** View from gateway along minor road leading to Greendale Business Park, to the south of A3052.
- VP8** View from East Devon Way recreational route, in East Devon Area of Outstanding Natural Beauty (AONB).

[Click here to tell us your views](#)

VP1 View from gateway along Sanctuary Lane, adjacent to Sanctuary Farm.

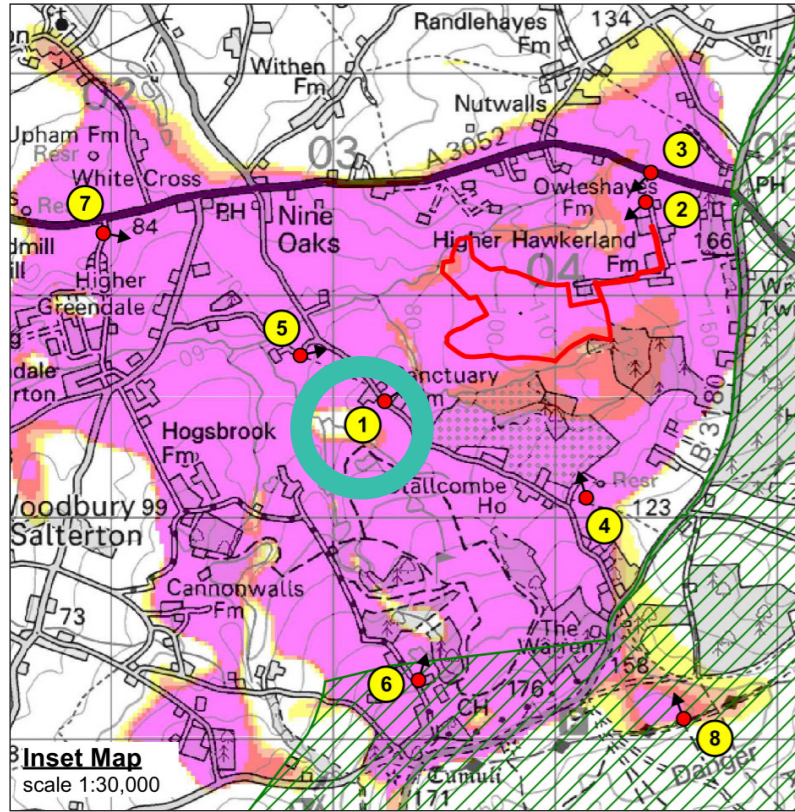


Figure 1A
VP1 - From gateway along Sanctuary Lane, adjacent to Sanctuary Farm.

OS grid reference:	E 30321 N 8924	Horizontal field of view:	90° (cylindrical projection)	Camera:	Canon EOS 5D Mark II	Date:	07/06/2022	Proposed Solar Development at Higher Haverhill Farm
Viewpoint altitude:	89m	Paper size:	B41 x 297mm	Lens:	Canon fixed 50mm focal length	Drawn by:	PS	amalgam landscape
Direction of view:	North-west	Weather and lighting conditions:	Cloudy and Good	Camera height:	1.6m	Engagement:	100%	www.amalgamlandscape.co.uk
Distance to site:	396m	View Rat at comfortable arms length:		Date and time of photo:	08/02/2022 10:58am			



Figure 1B
VP1 - From gateway along Sanctuary Lane, adjacent to Sanctuary Farm at year 1.

OS grid reference:	E 30321 N 8924	Horizontal field of view:	90° (cylindrical projection)	Camera:	Canon EOS 5D Mark II	Date:	07/06/2022	Proposed Solar Development at Higher Haverhill Farm
Viewpoint altitude:	89m	Paper size:	B41 x 297mm	Lens:	Canon fixed 50mm focal length	Drawn by:	PS	amalgam landscape
Direction of view:	North-west	Weather and lighting conditions:	Cloudy and Good	Camera height:	1.6m	Engagement:	100%	www.amalgamlandscape.co.uk
Distance to site:	396m	View Rat at comfortable arms length:		Date and time of photo:	08/02/2022 10:58am			



Figure 1C
VP1 - From gateway along Sanctuary Lane, adjacent to Sanctuary Farm at year 10.

OS grid reference:	E 30321 N 8924	Horizontal field of view:	90° (cylindrical projection)	Camera:	Canon EOS 5D Mark II	Date:	07/06/2022	Proposed Solar Development at Higher Haverhill Farm
Viewpoint altitude:	89m	Paper size:	B41 x 297mm	Lens:	Canon fixed 50mm focal length	Drawn by:	PS	amalgam landscape
Direction of view:	North-west	Weather and lighting conditions:	Cloudy and Good	Camera height:	1.6m	Engagement:	100%	www.amalgamlandscape.co.uk
Distance to site:	396m	View Rat at comfortable arms length:		Date and time of photo:	08/02/2022 10:58am			

- VP2** View from gateway along access road leading to Higher Hawkerland Farm.
- VP3** View from bus stop along A3052.
- VP4** View from public right of way near Sunnyhay Farm.

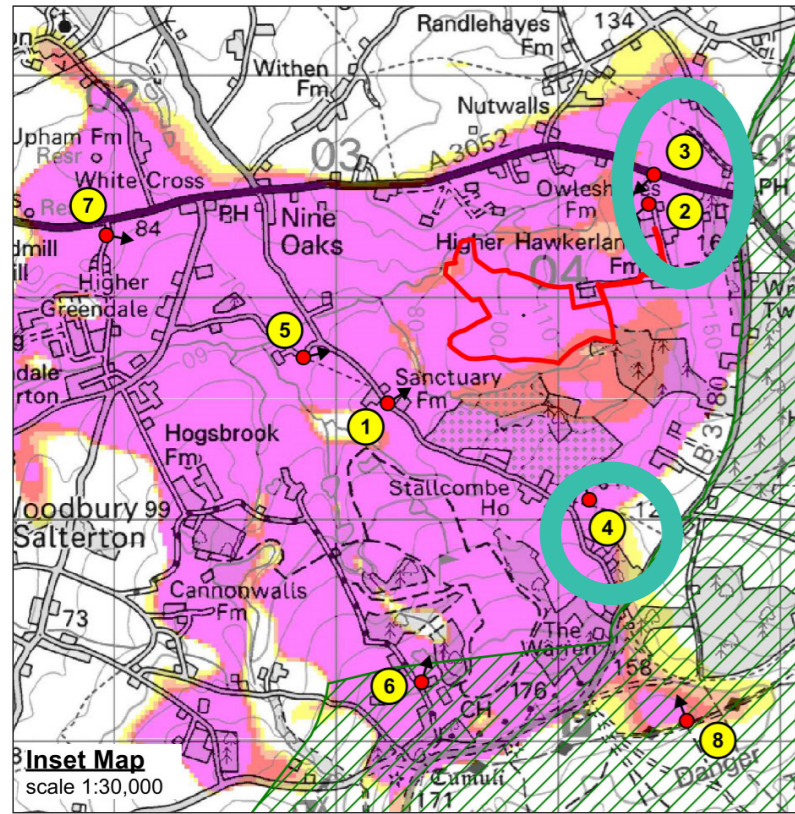


Figure 2
VP2 - From gateway along access road leading to Higher Hawkerland Farm.

OS grid reference:	E 304407 N 90421	Horizontal field of view:	90° (cylindrical projection)	Camera:	Canon EOS 5D Mark II	Date:	07/06/2022	Proposed Solar Development at Higher Hawkerland Farm.
Viewpoint altitude:	130m	Paper size:	A4 (1 x 210mm)	Lens:	Canon lens 50mm focal length	Drawn by:	PH	amalgam landscape
Direction of view:	South-west	Weather and lighting conditions:	Cloudy and Good	Camera height:	1.6m	Rev:	1	www.amalgamlandscape.co.uk
Distance to site:	400m	View flat at comfortable arms length:		Date and time of photo:	08/02/2022 1:47pm	Engagement:	100%	



Figure 3
VP3 - From bus stop along A3052.

OS grid reference:	E 304430 N 90554	Horizontal field of view:	90° (cylindrical projection)	Camera:	Canon EOS 5D Mark II	Date:	07/06/2022	Proposed Solar Development at Higher Hawkerland Farm.
Viewpoint altitude:	120m	Paper size:	A4 (1 x 210mm)	Lens:	Canon lens 50mm focal length	Drawn by:	PH	amalgam landscape
Direction of view:	South-west	Weather and lighting conditions:	Cloudy and Good	Camera height:	1.6m	Rev:	1	www.amalgamlandscape.co.uk
Distance to site:	624m	View flat at comfortable arms length:		Date and time of photo:	08/02/2022 1:52pm	Engagement:	100%	



Figure 4
VP4 - From public right of way near Sunnyhay Farm.

OS grid reference:	E 304138 N 90982	Horizontal field of view:	90° (cylindrical projection)	Camera:	Canon EOS 5D Mark II	Date:	07/06/2022	Proposed Solar Development at Higher Hawkerland Farm.
Viewpoint altitude:	120m	Paper size:	A4 (1 x 210mm)	Lens:	Canon lens 50mm focal length	Drawn by:	PH	amalgam landscape
Direction of view:	North	Weather and lighting conditions:	Cloudy and Good	Camera height:	1.6m	Rev:	1	www.amalgamlandscape.co.uk
Distance to site:	845m	View flat at comfortable arms length:		Date and time of photo:	08/02/2022 11:29am	Engagement:	100%	

- VP5** View from public right of way near Winkleigh Farm.
- VP6** View from Woodbury Park Golf Club, in East Devon Area of Outstanding Natural Beauty (AONB).
- VP8** View from East Devon Way recreational route, in East Devon Area of Outstanding Natural Beauty (AONB).

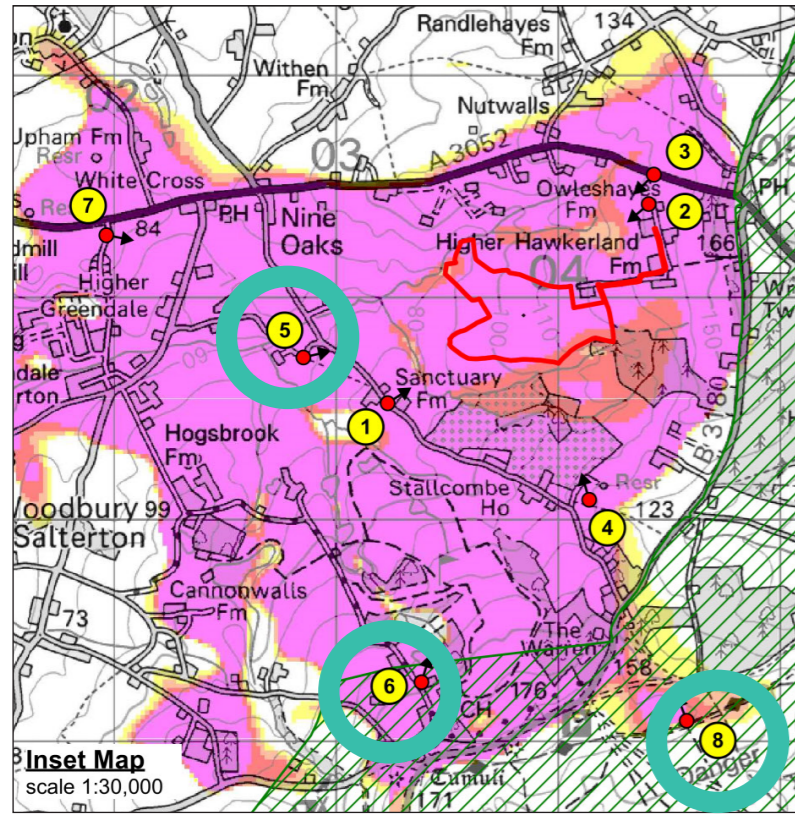


Figure 5
VP5 - From public right of way near Winkleigh Farm.

OS grid reference: E 30285 N 89730	Horizontal field of view: 90° (cylindrical projection)	Camera: Canon EOS 5D Mark II	Date: 07/06/2022	Proposed Solar Development at Higher Hawkerland Farm
Viewpoint altitude: 89m	Paper size: A4 x 297mm	Lens: Canon fixed 50mm focal length	Drawn by: PJS	
Direction of view: East	Weather and lighting conditions: Cloudy and Good	Camera height: 1.6m	Rev:	
Distance to site: 676m	View flat at comfortable arms length	Date and time of photo: 08/02/2022 10:48am	Enlargement: 100%	
<small>© 2022 Amalgam Landscape. All rights reserved. www.amalgamlandscape.co.uk</small>				



Figure 6
VP6 - From Woodbury Park Golf Club, in East Devon Area of Outstanding Natural Beauty (AONB).

OS grid reference: E 30285 N 89271	Horizontal field of view: 90° (cylindrical projection)	Camera: Canon EOS 5D Mark II	Date: 07/06/2022	Proposed Solar Development at Higher Hawkerland Farm
Viewpoint altitude: 142m	Paper size: A4 x 297mm	Lens: Canon fixed 50mm focal length	Drawn by: PJS	
Direction of view: North	Weather and lighting conditions: Cloudy and Good	Camera height: 1.6m	Rev:	
Distance to site: 1.45km	View flat at comfortable arms length	Date and time of photo: 08/02/2022 12:53pm	Enlargement: 100%	
<small>© 2022 Amalgam Landscape. All rights reserved. www.amalgamlandscape.co.uk</small>				



Figure 7
VP8 - From East Devon Way recreational route, in East Devon Area of Outstanding Natural Beauty (AONB).

OS grid reference: E 304076 N 89203	Horizontal field of view: 90° (cylindrical projection)	Camera: Canon EOS 5D Mark II	Date: 07/06/2022	Proposed Solar Development at Higher Hawkerland Farm
Viewpoint altitude: 161m	Paper size: A4 x 297mm	Lens: Canon fixed 50mm focal length	Drawn by: PJS	
Direction of view: North	Weather and lighting conditions: Cloudy and Good	Camera height: 1.6m	Rev:	
Distance to site: 1.75km	View flat at comfortable arms length	Date and time of photo: 08/02/2022 12:53pm	Enlargement: 100%	
<small>© 2022 Amalgam Landscape. All rights reserved. www.amalgamlandscape.co.uk</small>				

VP7 View from gateway along minor road leading to Greendale Business Park, to the south of A3052.

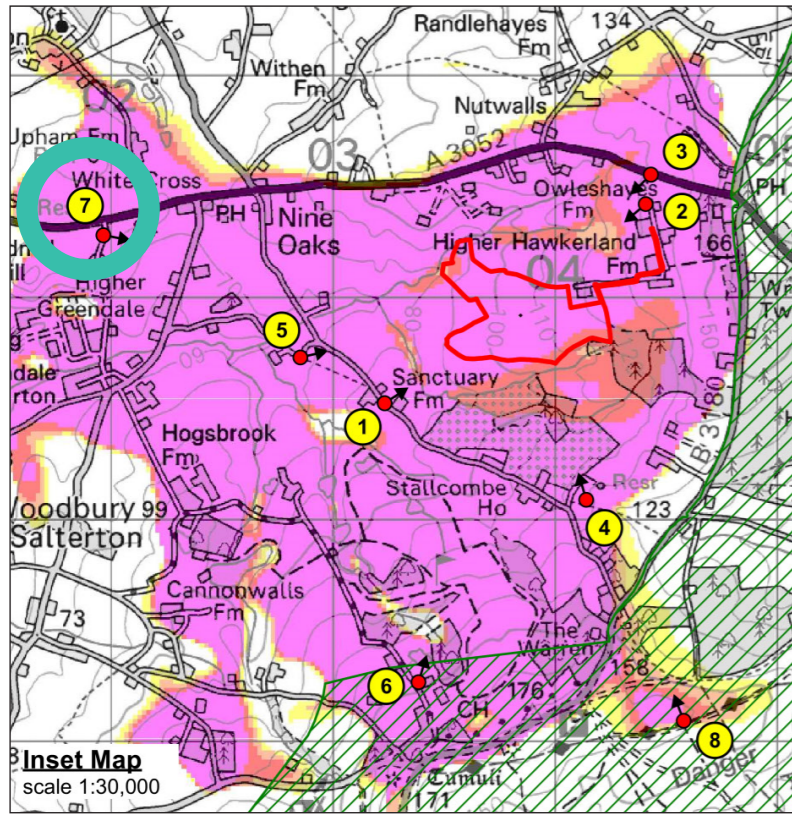


Figure 8A
VP7 - From gateway along minor road leading to Greendale Business Park, to the south of A3052.

OS grid reference:	E 301963 N 90281	Horizontal field of view:	90° (cylindrical projection)	Camera:	Canon EOS 5D Mark II	Date:	07/08/2022	Proposed Solar Development at Higher Hawkerland Farm
Viewpoint altitude:	86m	Paper size:	841 x 297mm	Lens:	Canon lens 50mm focal length	Drawn by:	PS	amalgam landscape
Direction of view:	East	Weather and lighting conditions:	Cloudy and Good	Camera height:	1.6m	Rev:	1	01275 527077
Distance to site:	1.58km	View far at comfortable arms length:		Date and time of photo:	08/02/2022 10:17am	Engagement:	100%	www.amalgamlandscape.co.uk



Figure 8B
VP7 - From gateway along minor road leading to Greendale Business Park, to the south of A3052 at year 1.

OS grid reference:	E 301963 N 90281	Horizontal field of view:	90° (cylindrical projection)	Camera:	Canon EOS 5D Mark II	Date:	07/08/2022	Proposed Solar Development at Higher Hawkerland Farm
Viewpoint altitude:	86m	Paper size:	841 x 297mm	Lens:	Canon lens 50mm focal length	Drawn by:	PS	amalgam landscape
Direction of view:	East	Weather and lighting conditions:	Cloudy and Good	Camera height:	1.6m	Rev:	1	01275 527077
Distance to site:	1.58km	View far at comfortable arms length:		Date and time of photo:	08/02/2022 10:17am	Engagement:	100%	www.amalgamlandscape.co.uk



Figure 8C
VP7 - From gateway along minor road leading to Greendale Business Park, to the south of A3052 at year 10.

OS grid reference:	E 301963 N 90281	Horizontal field of view:	90° (cylindrical projection)	Camera:	Canon EOS 5D Mark II	Date:	07/08/2022	Proposed Solar Development at Higher Hawkerland Farm
Viewpoint altitude:	86m	Paper size:	841 x 297mm	Lens:	Canon lens 50mm focal length	Drawn by:	PS	amalgam landscape
Direction of view:	East	Weather and lighting conditions:	Cloudy and Good	Camera height:	1.6m	Rev:	1	01275 527077
Distance to site:	1.58km	View far at comfortable arms length:		Date and time of photo:	08/02/2022 10:17am	Engagement:	100%	www.amalgamlandscape.co.uk